

KNAUF

EN

NOVEMBER 2015



KNAUF GYPSUM

COMPANY PROFILE



Mr. Manfred Grundke and Alexander Knauf

Our History

The Knauf group

Knauf, a family name, and a corporate group of global dimensions. At the same time synonymous with a type of corporate culture which has become rare. Knauf is a typical family firm in spite of its size and this is precisely the reason for its amazing success. It is the short and direct decision-making paths, the courage to tackle new ideas, innovations, investments and the wealth of ideas contributed by all Knauf employees that characterises the company.

Knauf was founded in 1932 by the brothers Karl and Dr. Alfons N. Knauf. Today their sons, managing partners Baldwin and Nikolaus Knauf, steer the success of the corporations' numerous enterprises in close co-ordination with the other family members. From its beginnings in gypsum processing along the Saar and Main rivers, Knauf has expanded and diversified to become a corporation with worldwide activities, delivering products and services in the following fields:

- Building materials and systems based on gypsum and gypsum-related products
- Thermal insulating and sound insulation materials
- Limestone and lime products
- Chalk and cement related products
- Plant engineering

Currently, the management of the Knauf Group is in the hands of Manfred Grundke and Alexander Knauf, who are also personally liable general partners. Knauf: A group of companies with a long history. Great success. Poised for the challenges of the future. Knauf can

For further information on the Knauf Group worldwide surf to www.knauf.co.th

Knauf Worldwide

Leader of Gypsum manufacturing industry

220 manufacturing plants in over 60 countries



Knauf is a provider of complete lightweight construction systems internationally. A diverse range of products include plasterboard, mineral fibre tiles, acoustic boards, plasters for internal and external applications; and glass and rock mineral wool insulation. With 220 production facilities and sales organisations in over 60 countries, 26,000 employees worldwide, and sales of 6.27 billion Euro (in 2013), the Knauf Group is without doubt one of the big players on the market in Europe, USA, South America, Russia, Africa, Australia and Asia.

A quality range of products and systems designed for performance provide solutions for fire, moist, impact, acoustic and decorative applications for all construction projects - commercial and residential.

Knauf's innovative lightweight construction systems include gypsum board, metal systems for walls and ceilings, acoustic and air cleaning wall & ceiling linings and mineral fibre ceiling tiles



Knauf Gypsum Thailand

Knauf Thailand Today

Knauf Gypsum Thailand is determined to become a Thailand business leader in gypsum, with manufacturing technology and innovation under German standard makes Knauf become prominent in the market in both innovation of living and environmentally friendly product in order to meet customer needs today and future.

Vision

Knauf sets the benchmark

- for gypsum-based products and systems
- for energy-efficient insulation materials
- for market development and customer orientation

We are at the vanguard with our market leadership, innovation and production. These objectives ensure that we achieve above-average and profitable growth.

About Knauf Products

Knauf german technology products

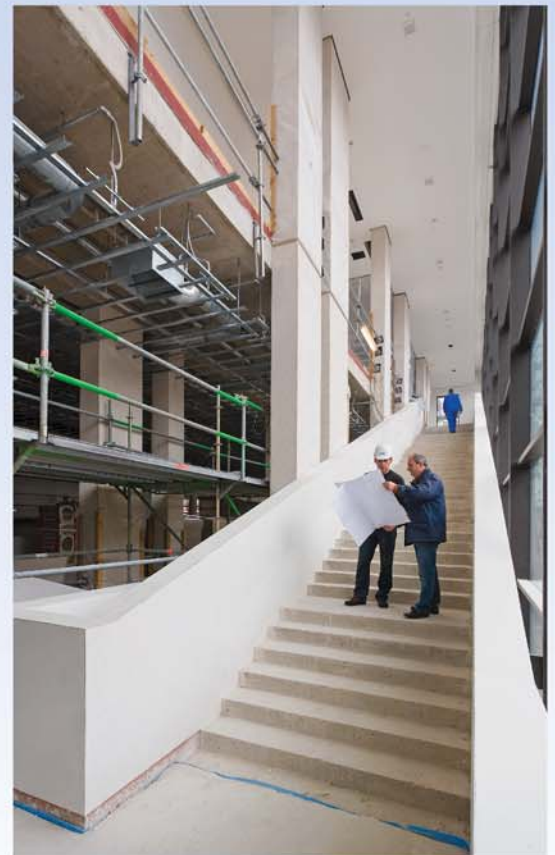
Knauf product manufactured under German technology with global standard quality and environmentally friendly.

Knauf Standard

- TIS 219-2552
- ASTM C1396 (USA)
- EN 520 (EU)
- DIN 18180 (Germany)
- BS 1230 (UK)
- AS/NZS 2588 (Australia & New Zealand)

Quality product Knauf brand

- Gypsumboard
- Knauf ceiling tile
- Access panel
- Acoustic board
- Metal profile
- Jointing compound



Site Reference

Knauf Project Worldwide





Knauf Gypsum (Thailand) Limited

598 Q. House Ploenjit Building Room No. 18BC & 19B
18th - 19th Floor, Ploenjit Road, Lumpini, Pathumwan
Bangkok 10330 Thailand
Phone : +66 (0) 2 6896077
Fax : +66 (0) 2 6896001

www.knauf.co.th



TIS 219-2552